

**TITLE: POLICY DESCRIBING THE FACILITY OWNERSHIP AND
MAINTENANCE RESPONSIBILITIES FOR THE VARIOUS MEANS
OF PROVIDING ELECTRICAL SERVICE**

Effective Date: 8/4/09

Adopted by Board: 8/4/09
Revised by Board: _____

Certified by: _____


The Wallingford Electric Division (WED) provides electric service to its customers via various physical configurations, each of which has unique provisions regarding the ownership and maintenance of the electric service facilities.

The purpose of this Policy is to describe and codify these ownership and maintenance responsibilities for most of the typical electric service configurations. This Policy recognizes that there may be instances and situations that do not precisely conform to any of the various electric service configurations described herein. In these cases, the General Manager or his designee shall, before permanent service is established, determine which portions of the service facilities are to be owned and/or maintained by the customer, and which by the WED.

Overhead Services

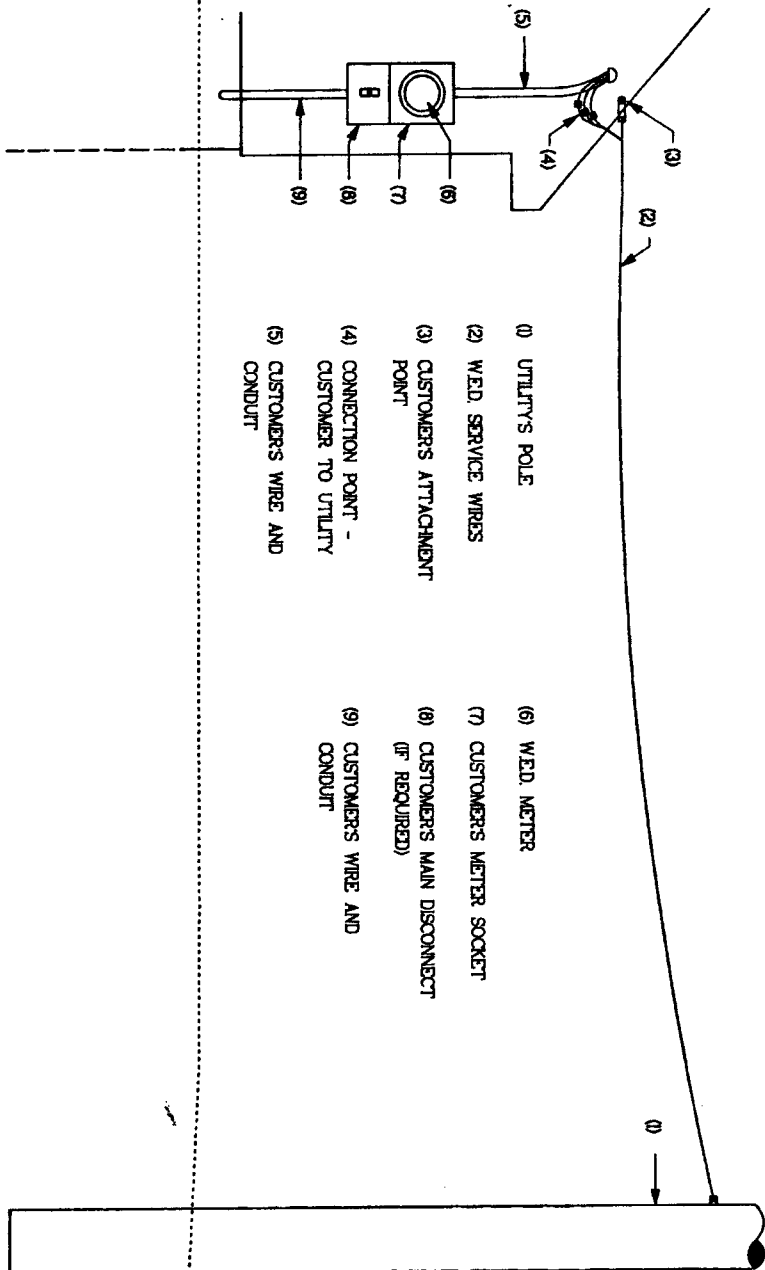
Nearly all overhead services (residential, commercial, and industrial) at secondary voltages (less than 600-volts) can be described by the attached drawing OH 001. The WED owns the overhead service wires, and the customer owns the physical attachment point where the WED's wires attach to the customer's building. The electrical "point of demarcation" between the WED and the customer is the connectors between the WED's service wires and the customer's wiring. The only item that the WED owns and maintains beyond these connectors is the meter.

Customers taking overhead service at primary voltage (13,800-volts) shall be metered at the primary voltage. Attached drawing OH 002 illustrates a typical primary overhead service facility, including the metering. In this drawing, the WED owns everything to the left of item (3), the customer's physical connection to the WED's overhead primary system. The customer owns and maintains its electric distribution facilities from this point.

Underground Services

Underground service arrangements are much more varied than overhead services. Underground services can, however, be described by four basic configurations.

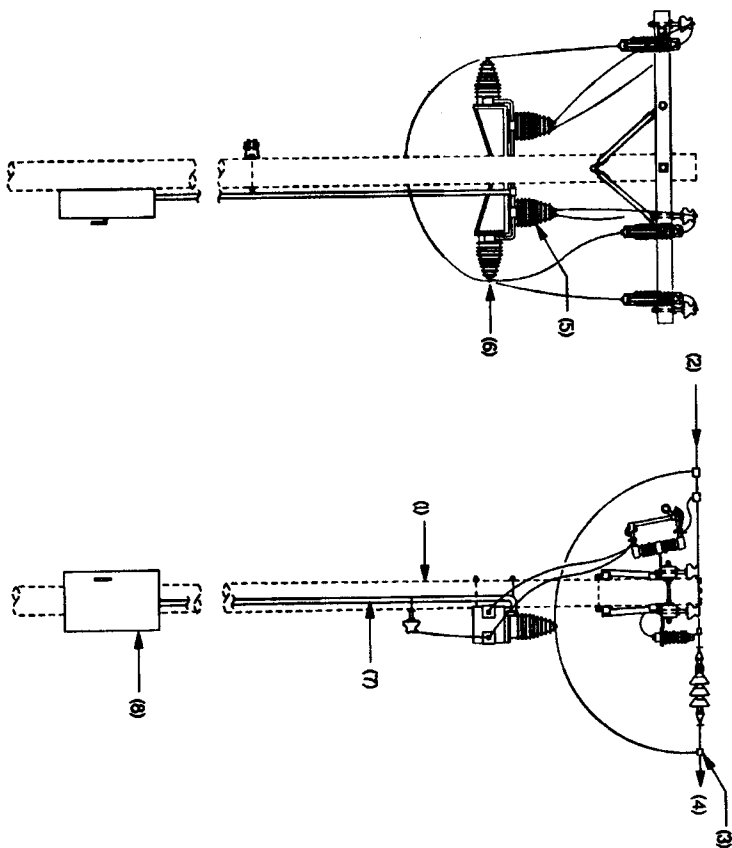
1. Underground services at secondary voltages (less than 600-volts) supplied from WED overhead facilities (see attached drawings UG 001 and UG 002). In these instances, the WED owns the connectors that attach the customer's underground cables to the WED's overhead wires, and the meter. The customer owns and maintains all other electric service facilities.
2. Underground services at secondary voltages (less than 600-volts) supplied from WED underground facilities (see attached drawings UG 003 through UG 008). In these instances, the WED owns and maintains the underground service facilities up to and including the last point of connection before the customer's meter. From this point of connection to the customer's building, the customer owns and maintains all of the underground service facilities, excluding the meter. It should be noted that, depending on the specific configuration of an underground service, the customer may be responsible for providing and/or installing some of the underground service facilities that will be owned and maintained by the WED. These specific provision and/or ownership responsibilities are noted on the above-listed drawings.
3. Underground services at primary voltages (13.8-kV) supplied from WED overhead facilities (see attached drawings UG 009 through UG 011). In these instances, the customer always owns and maintains all facilities from the bottom (load side) of the WED's fused cutouts to the customer's building, except for the meter, and in some cases the transformer. The WED does not own any primary voltage underground service facilities supplied directly from WED primary overhead lines.
4. Underground services at primary voltages (13.8-kV) supplied from WED underground facilities (see attached drawing UG 012). In these cases, the customer owns the underground distribution facilities from the WED manhole, vault, splice box or junction pedestal (sectionalizing device) to its facilities. The WED owns the underground distribution facilities that supply the sectionalizing device, as well as the device itself.




- | | |
|--|--|
| (1) UTILITY'S POLE | (6) WED. METER |
| (2) WED. SERVICE WIRES | (7) CUSTOMER'S METER SOCKET |
| (3) CUSTOMER'S ATTACHMENT POINT | (8) CUSTOMER'S MAIN DISCONNECT (IF REQUIRED) |
| (4) CONNECTION POINT - CUSTOMER TO UTILITY CONDUIT | (9) CUSTOMER'S WIRE AND CONDUIT |

REVISION =	REV DATE:
REV DATE: 01/1/81	REV DATE: 01/1/81
WALLINGFORD ELECTRIC DIVISION DEPARTMENT OF PUBLIC UTILITIES 100 JON STREET WALLINGFORD, CONNECTICUT 06495	


TITLE:	DRAWING NO:
RESIDENTIAL O/H SERVICE INDUSTRIAL/COMMERCIAL O/H SERVICE DIRECT METERING	OH 001



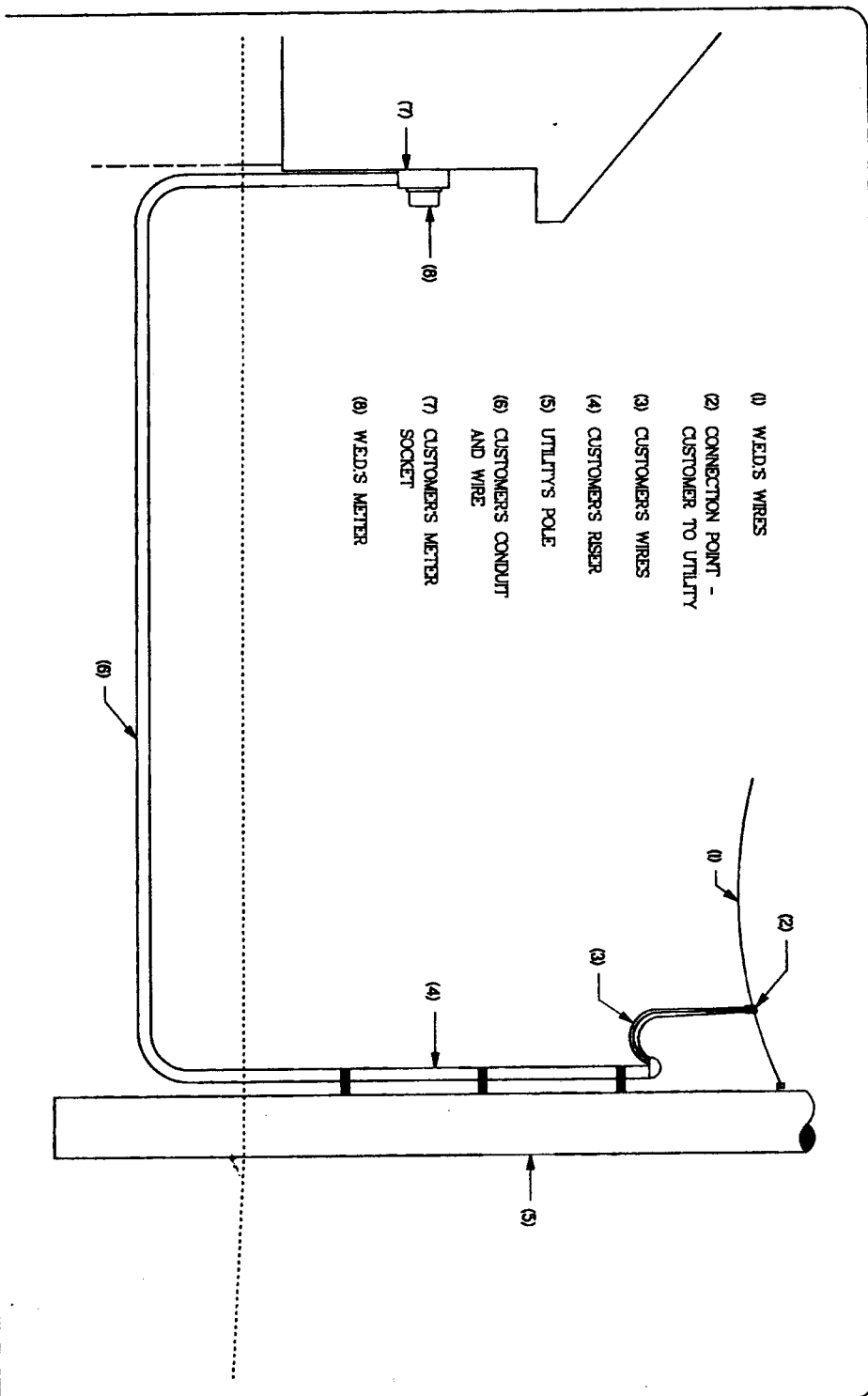
- (1) UTILITY POLE
- (2) UTILITY LINES AND EQUIPMENT
- (3) CONNECTION POINT, CUSTOMER TO UTILITY
- (4) CUSTOMER'S POLE LINE, POLES, WIRE, EQUIPMENT, TRANSFORMERS, ETC.
- (5) UTILITY CURRENT TRANSFORMERS (CT)
- (6) UTILITY POTENTIAL TRANSFORMERS (PT)
- (7) UTILITY SECONDARY METERING CONDUIT
- (8) UTILITY METER ENCLOSURE

REVISION #	REV DATE
REV 001 BY	REV 001 BY
 WALLINGFORD ELECTRIC DIVISION DEPARTMENT OF PUBLIC UTILITIES 100 JOHN STREET WALLINGFORD, CONNECTICUT 06495	

TITLE:	DRAWING NO:
INDUSTRIAL/COMMERCIAL O/H PRIMARY SERVICE WITH PRIMARY METERING	OH 002

REVISION #	REV DATE
REV DATE	REV DATE
	
WALLINGFORD ELECTRIC DIVISION DEPARTMENT OF PUBLIC UTILITIES 100 MAIN STREET WALLINGFORD, CONNECTICUT 06495	

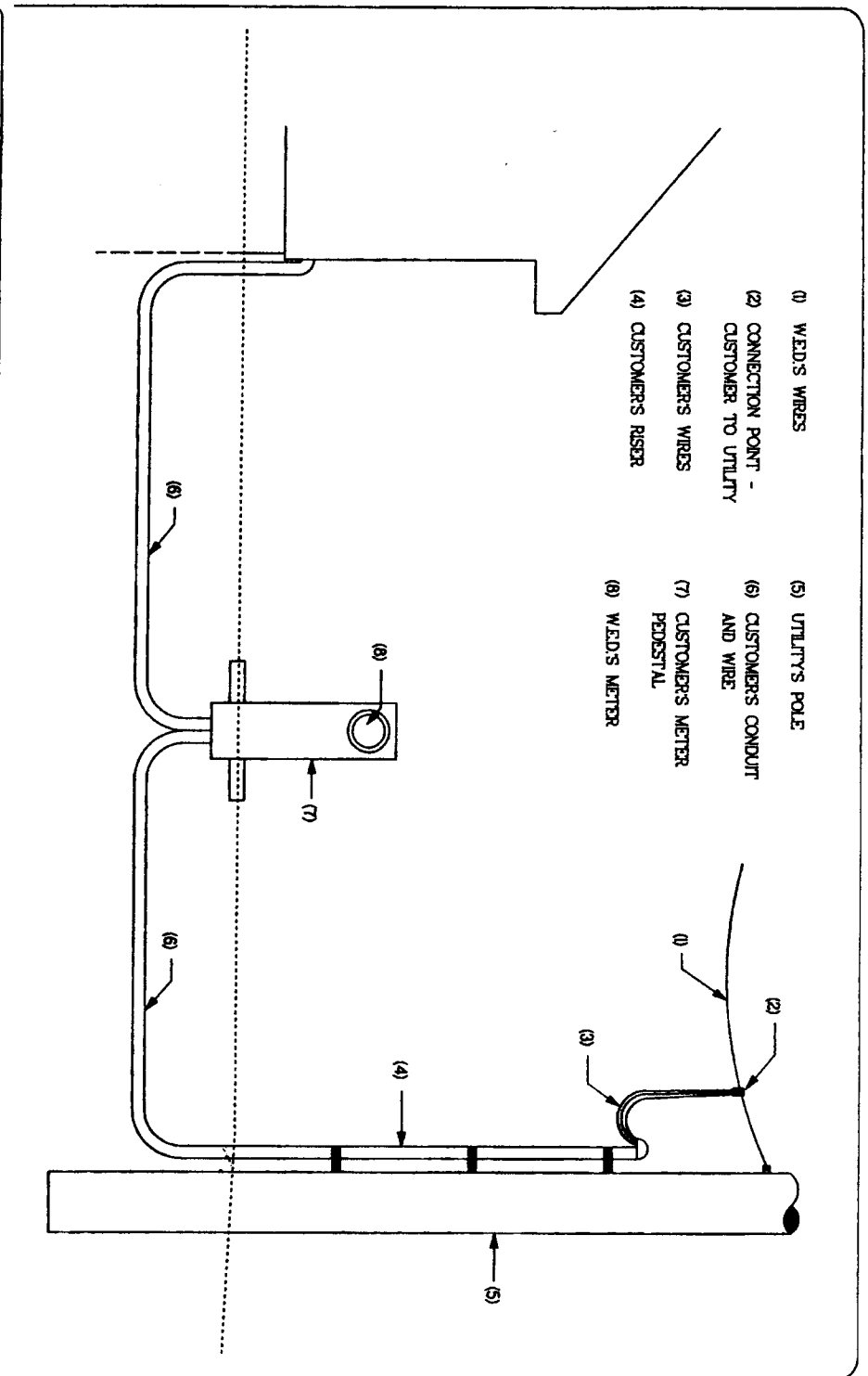
TITLE	DRAWING NO.
RESIDENTIAL U/G SERVICE FROM O/H FACILITIES INDUSTRIAL/COMMERCIAL U/G SERVICE FROM O/H FACILITIES	UG 001




REVISION = REV DATE BY REV DATE BY	TITLE RESIDENTIAL U/G SERVICE FROM O/H FACILITIES FREE STANDING METER PEDESTAL	DRAWING NO. UG 002
--	--	------------------------------

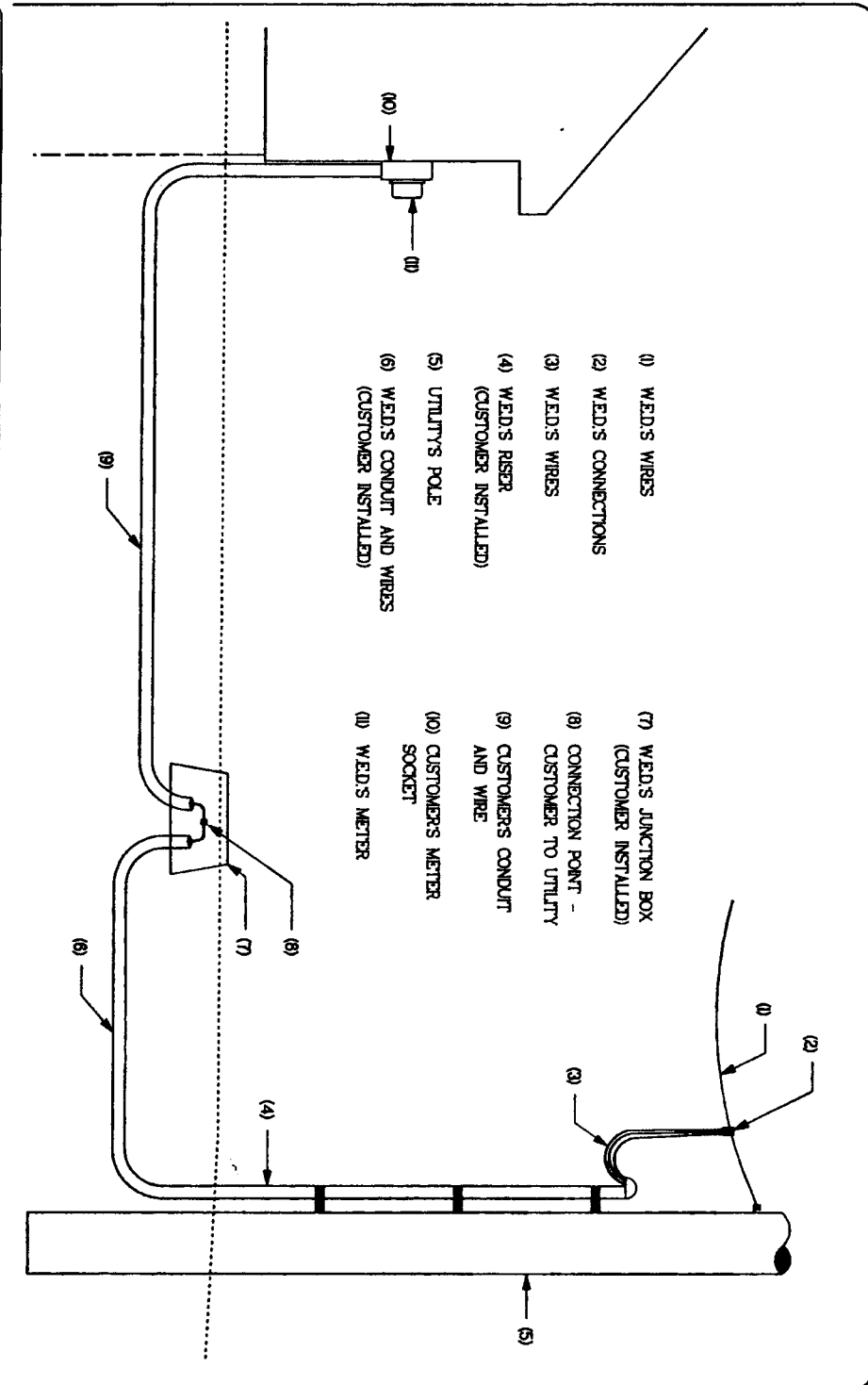



WALLINGFORD ELECTRIC DIVISION
 DEPARTMENT OF PUBLIC UTILITIES
 100 JOHN STREET
 WALLINGFORD, CONNECTICUT 06493



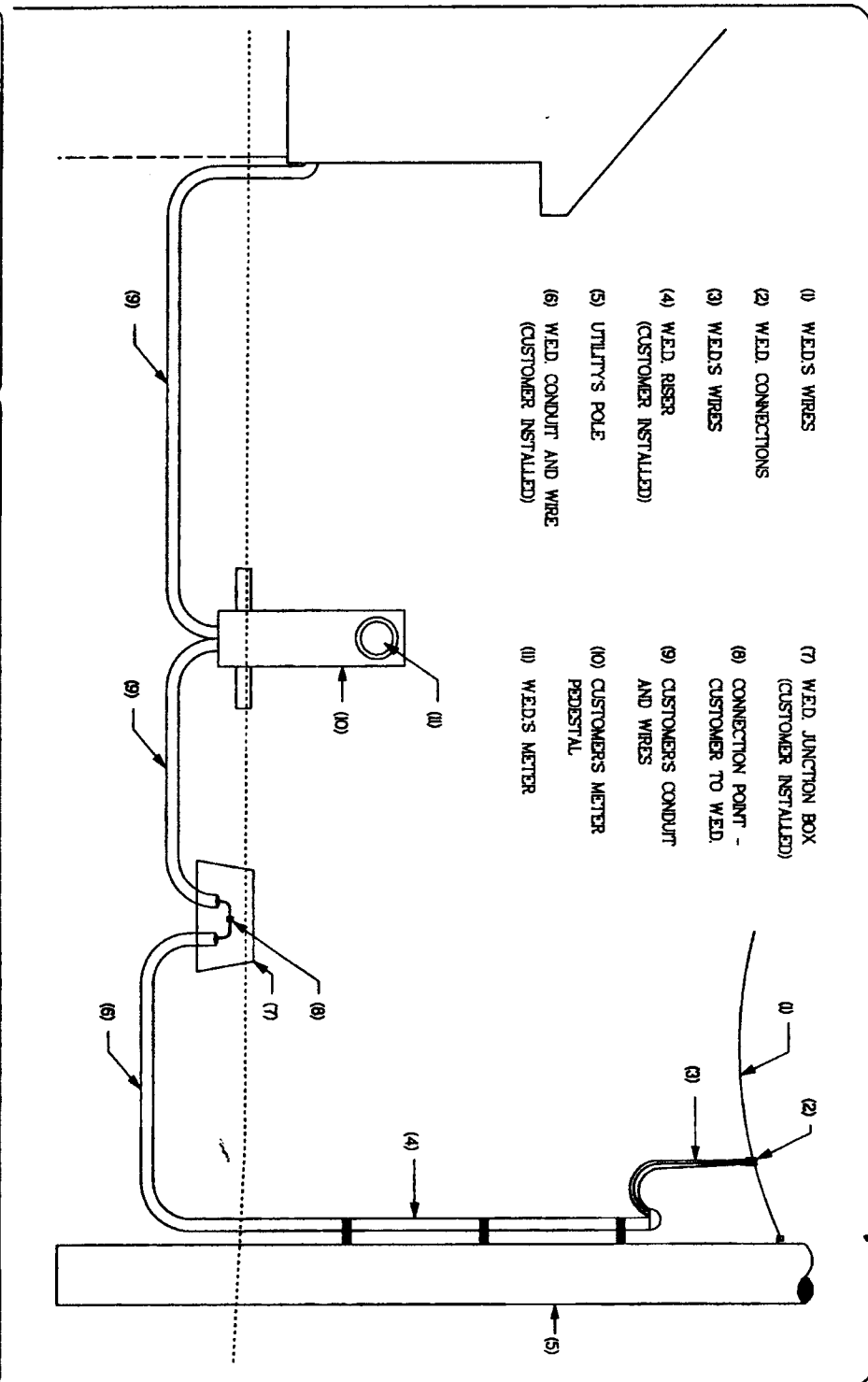
REVISION #	REV DATE
REV 001 BY	REV APR 9 87
 WALLINGFORD ELECTRIC DIVISION DEPARTMENT OF PUBLIC UTILITIES 100 JOHN STREET WALLINGFORD, CONNECTICUT 06492	


TITLE:	DRAWING NO:
RESIDENTIAL U/G SERVICE FROM O/H FACILITIES VIA JUNCTION BOX	UG 003



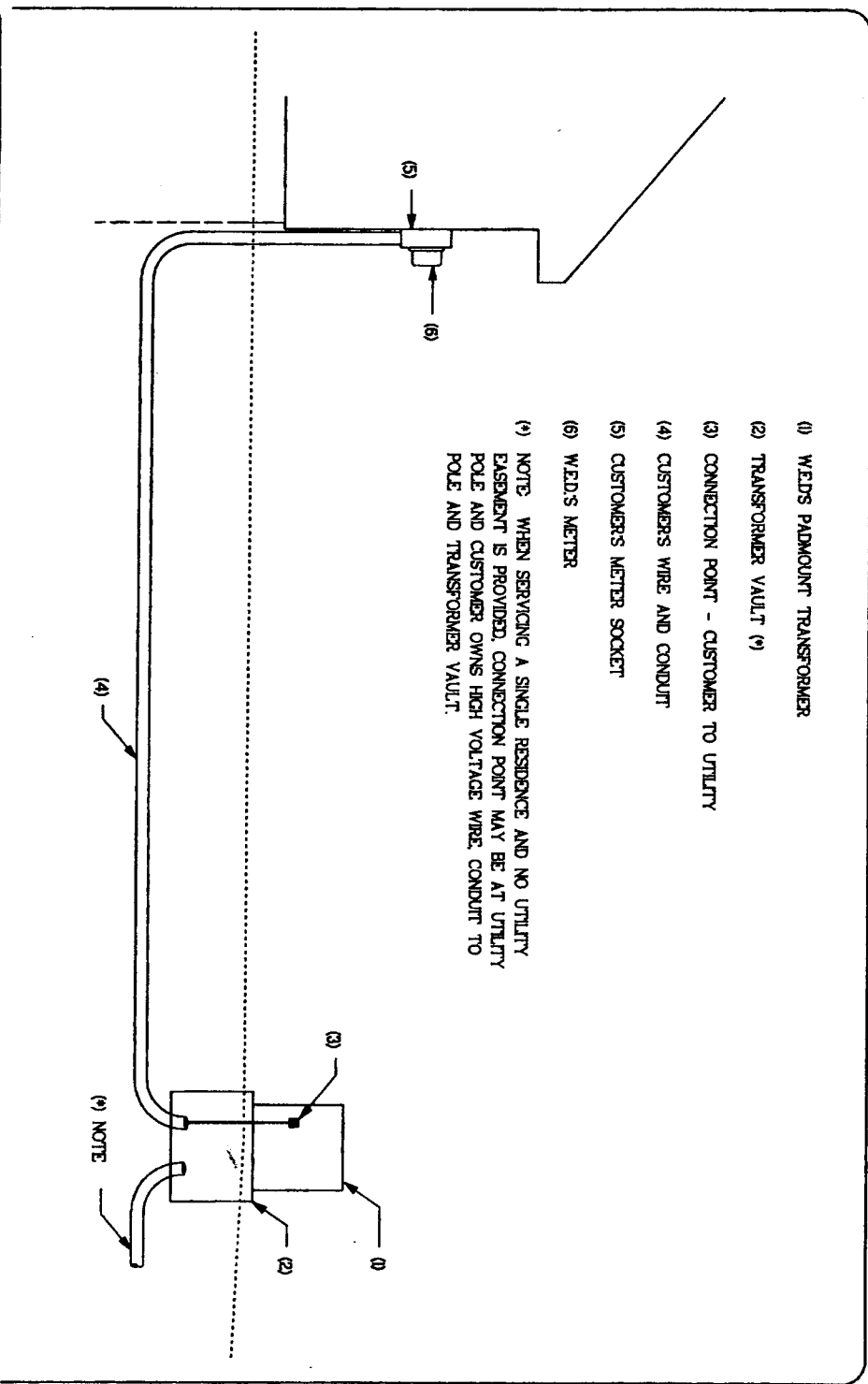
REVISION #	REV DATE
REV DATE BY	REV DATE BY
	
WALLINGFORD ELECTRIC DIVISION DEPARTMENT OF PUBLIC UTILITIES 100 MAIN STREET WALLINGFORD, CONNECTICUT 06495	


TITLE	DRAWING NO.
RESIDENTIAL U/G SERVICE FROM O/H FACILITIES FREE STANDING METER PEDESTAL VIA JUNCTION BOX	UG 004



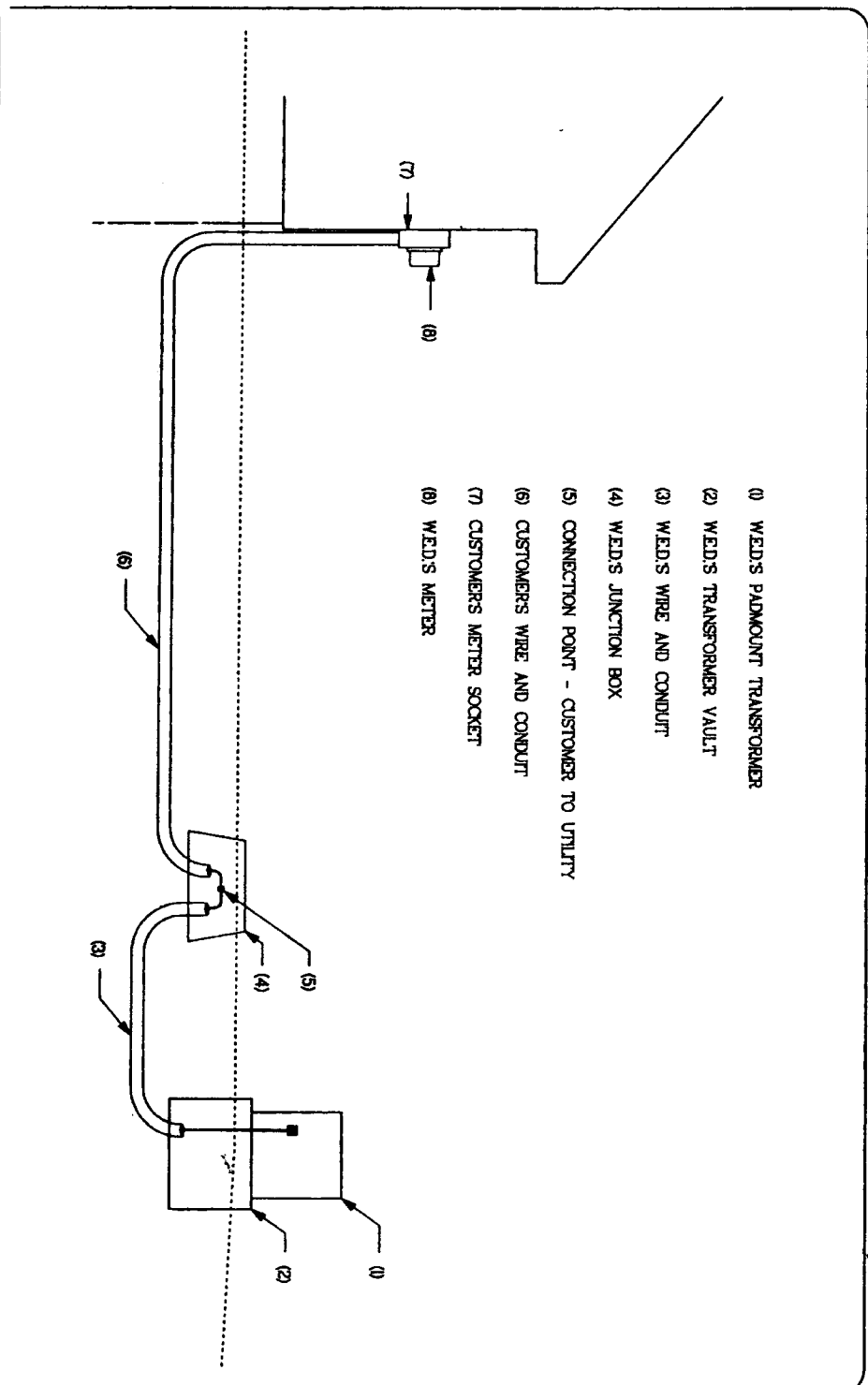
REVISION #	REV DATE
REV 001 8/71	REV 001 8/71
	
WALLINGFORD ELECTRIC DIVISION DEPARTMENT OF PUBLIC UTILITIES 100 JOHN STREET WALLINGFORD, CONNECTICUT 06492	


TITLE:	DRAWING NO.
RESIDENTIAL U/G SERVICE FROM U/G EQUIPMENT NOT IN A U.R.D. SUBDIVISION	UG 005

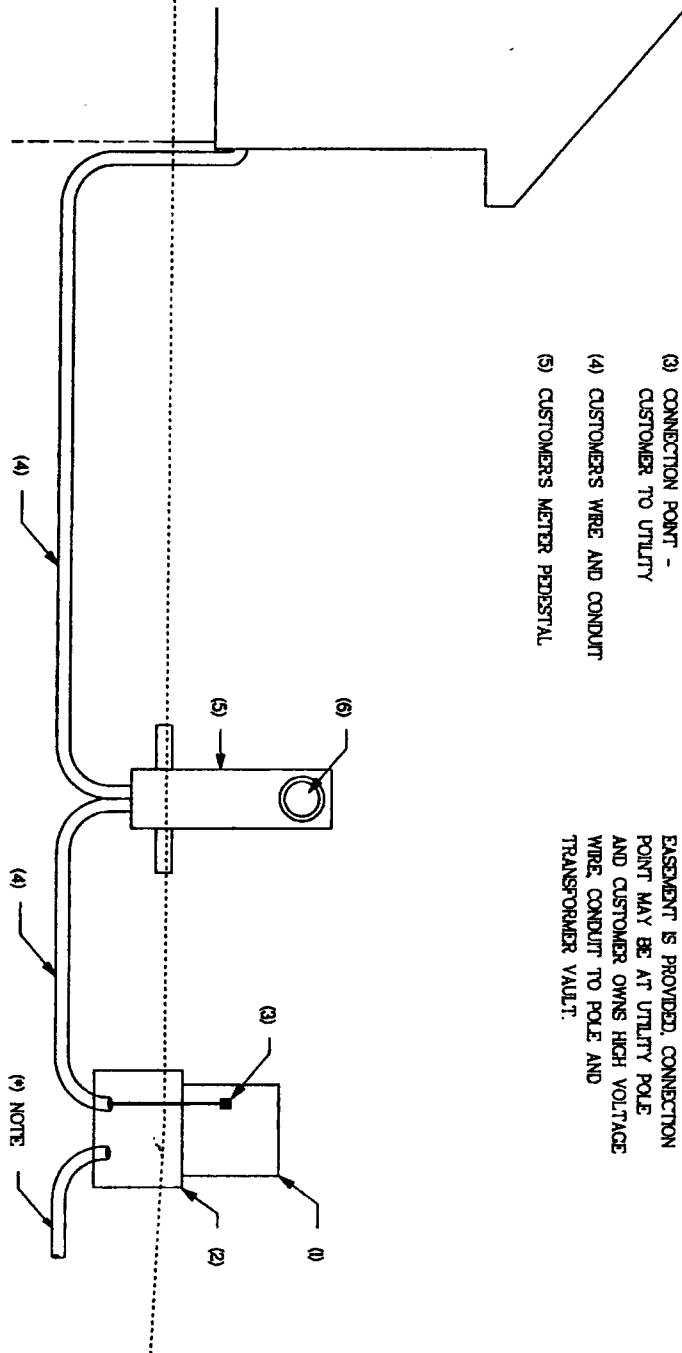



REVISION -	REV DATE:
REV DATE BY:	REV DATE BY:
	
WALLINGFORD ELECTRIC DIVISION DEPARTMENT OF PUBLIC UTILITIES 100 JOHN STREET WALLINGFORD, CONNECTICUT 06495	

TITLE:	DRAWING NO:
RESIDENTIAL U/G SERVICE FROM U/G EQUIPMENT VIA JUNCTION BOX NOT IN A U.R.D. SUBDIVISION	UG 006



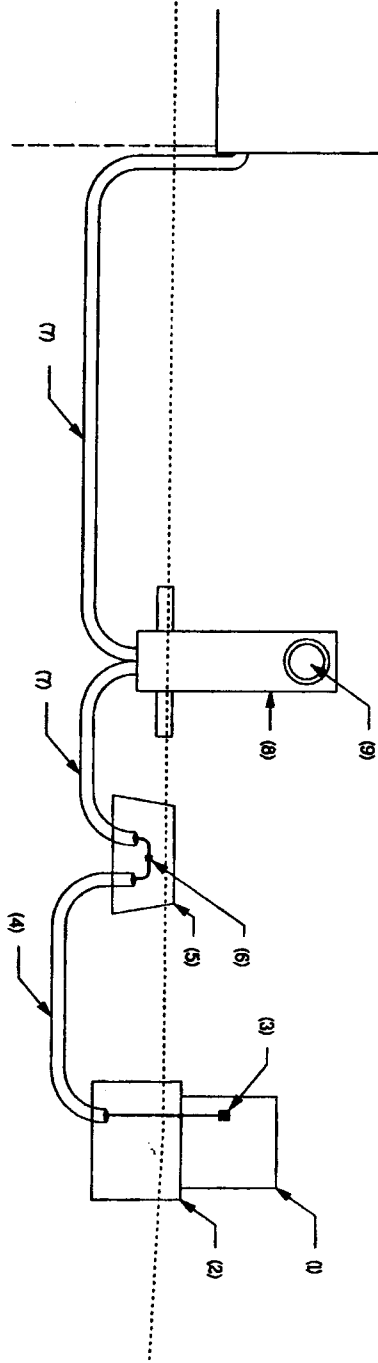
REVISION #	REV DATE	TITLE	DRAWING NO
REV 001 BY	REV 001 BY	RESIDENTIAL U/G SERVICE FROM U/G EQUIPMENT FREE STANDING METER PEDESTAL	UG 007
 WALLINGFORD ELECTRIC DIVISION DEPARTMENT OF PUBLIC UTILITIES 100 JOHN STREET WALLINGFORD, CONNECTICUT 06493			



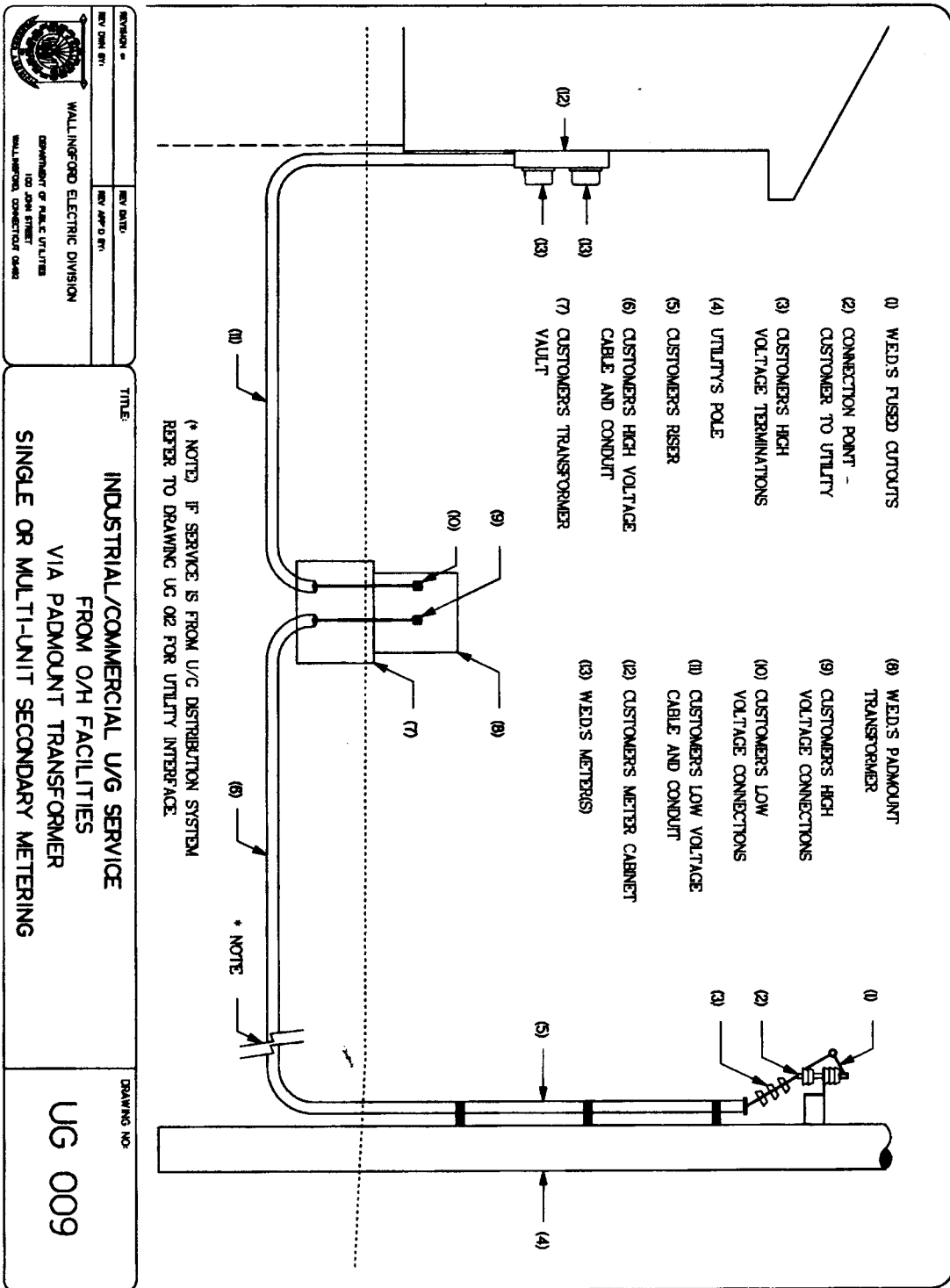
REVISION •	REV DATE
REV DATE BY	REV DATE BY
 WALLINGFORD ELECTRIC DIVISION DEPARTMENT OF PUBLIC UTILITIES 100 JOHN STREET WALLINGFORD, CONNECTICUT 06493	

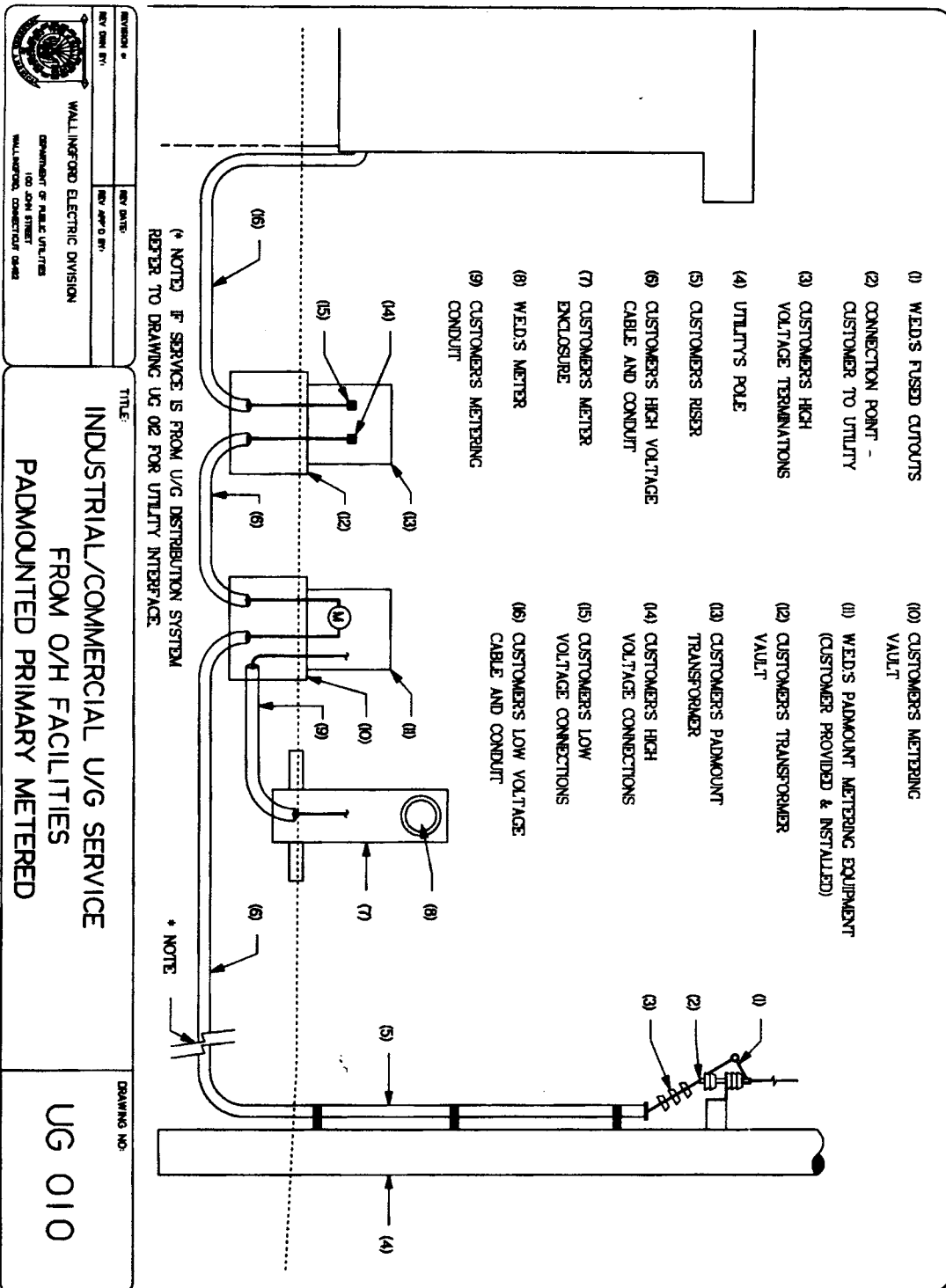
TITLE:
RESIDENTIAL U/G SERVICE FROM U/G EQUIPMENT FREE STANDING METER PEDESTAL VIA JUNCTION BOX

DRAWING NO:
UG 008




- (1) WEDS PADMOUNT TRANSFORMER
- (2) WEDS TRANSFORMER VAULT
- (3) WEDS CONNECTIONS
- (4) WEDS WIRE AND CONDUIT
- (5) WEDS JUNCTION BOX
- (6) CONNECTION POINT - CUSTOMER TO UTILITY
- (7) CUSTOMER'S WIRE AND CONDUIT
- (8) CUSTOMER'S METER PEDESTAL
- (9) WEDS METER



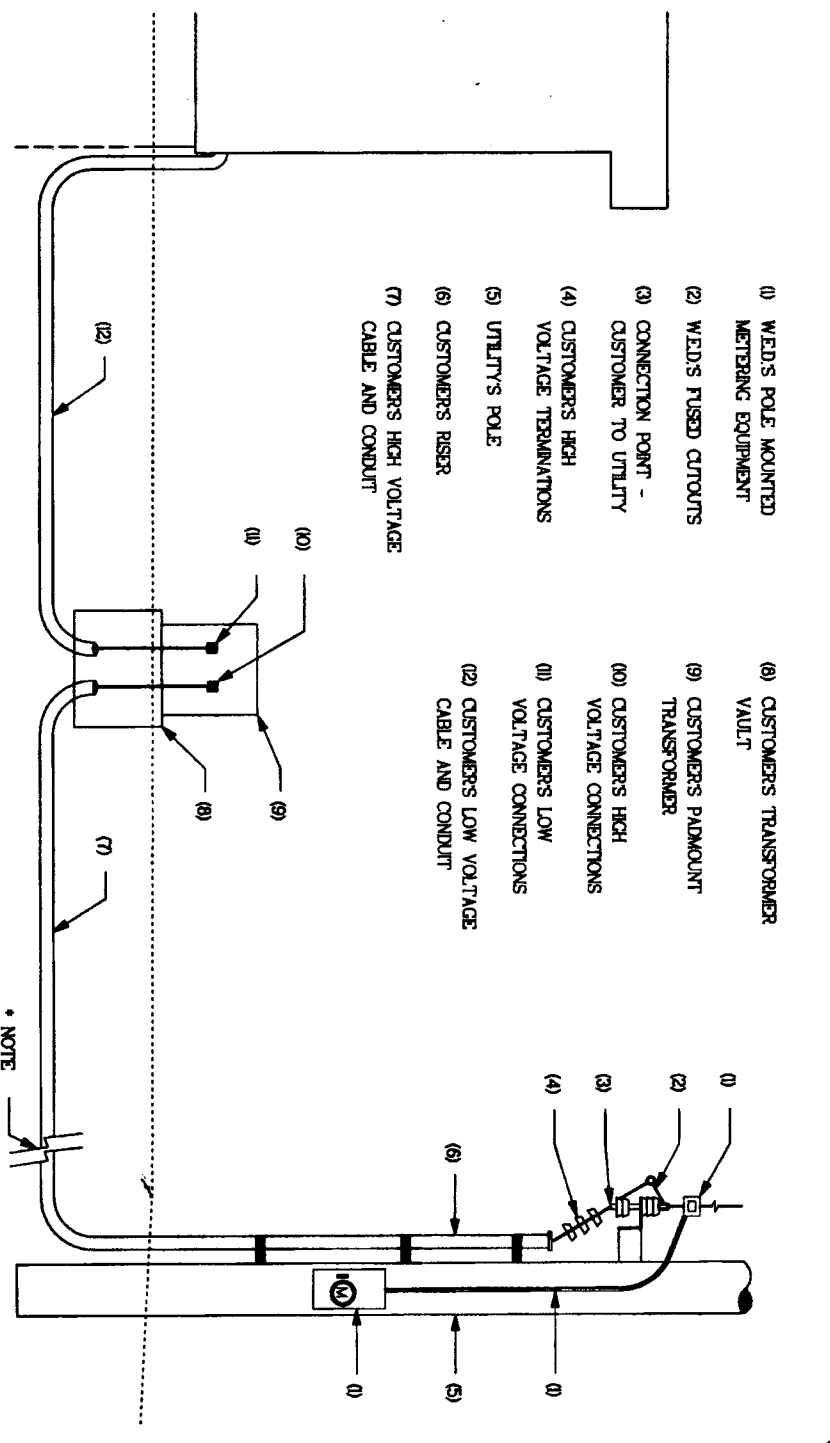


REVISION #	REV DATE
REV 001 01/01	REV 001 01/01

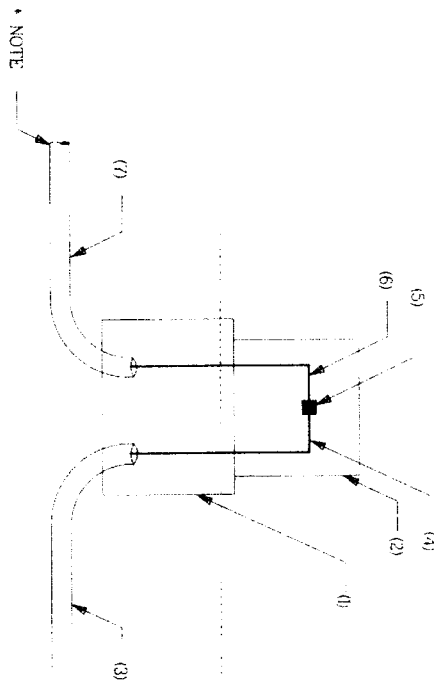

WALLINGSFORD ELECTRIC DIVISION
 DEPARTMENT OF PUBLIC UTILITIES
 100 JOHN STREET
 WALLINGSFORD, CONNECTICUT 06493

TITLE:	DRAWING NO:
INDUSTRIAL/COMMERCIAL U/G SERVICE FROM O/H FACILITIES POLE MOUNTED PRIMARY METER	UG 011

(* NOTE) IF SERVICE IS FROM U/G DISTRIBUTION SYSTEM
REFER TO DRAWING UG 012 FOR UTILITY INTERFACE.



- (8) WELD MANHOLE, VAULT, SPLICE BOX, OR JUNCTION PEDESTAL
- (9) WELD SWITCH SPLICE CABINET, OR JUNCTION PEDESTAL
MAY BE PADMOUNTED OR FLUSH TO GRADE/SUBSURFACE
- (3) WELD CONDUIT SYSTEM
- (4) WELD HIGH VOLTAGE WIRE AND TERMINATIONS
- (5) CONNECTION POINT, CUSTOMER TO UTILITY
- (6) CUSTOMER'S HIGH VOLTAGE WIRE AND TERMINATIONS
CABLE AND CONDUIT
- (7) CUSTOMER'S CONDUIT SYSTEM



(*) NOTE) REFER TO DRAWINGS UG 009 UG 010,
OR UG 011 FOR REMAINDER OF SERVICE DETAILS

REVISION	REV DATE
REV APP'D BY	
WASHINGTON ELECTRIC DIVISION DEPARTMENT OF TRANSPORTATION 1000 1ST AVENUE SEATTLE, WASHINGTON 98101	

INDUSTRIAL/COMMERCIAL U/G SERVICE
FROM U/G DISTRIBUTION FACILITIES

UG 012